

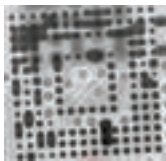
X-PRAY PARTS COUNTER



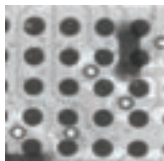
MICROFOCUS X-RAY INSPECTION SYSTEM



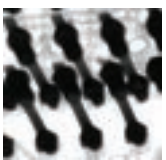
APPLICATION EXAMPLES



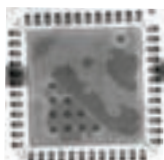
BGA solder bridge



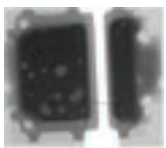
BGA solder voids



BGA through-hole



IC voids and gold wire



LED solder voids



LED gold wire crack

FEATURES

1. Top X-ray Technology

Japan Hamamatsu X-ray tube with 10,000+ hours lifespan, 5" HD digital flat panel detector (FPD)

2. Advanced Inspection Features

Automatic navigation window, 420*420mm table with 15KG capacity, speed-adjustable 3-axis linkage, optional 360° rotary jig.

3. User-Friendly and Efficient:

Customizable automated inspection procedures, easy operation with only 2 hours of training needed.

MICROFOCUS X-RAY INSPECTION SYSTEM



X-RAY PARTS COUNTER

XC-01



FEATURES

1. **Advanced X-ray Technology:** 80kV closed type X-ray tube, 17" super definition digital flat panel detector (FPD)

2. **Efficient Reel Handling:** Ultrafast counting (<10s for reels), supports up to 17" reels, automatic code scanning, counting, and label printing

3. **AI Integration and Connectivity:** Free AI deep learning updates, supports MES, ERP, WMS integration, work order management, and counting statistics

Reel size	Quantity	Accuracy	Speed
7" (180mm)	40000	99.98%	9-10s
7" (180mm)	20000	99.99%	8-9s
7" (180mm)	10000	99.99%	7-8s
7" (180mm)	5000	99.99%	7-8s
10" (254mm)	5000	99.99%	7-8s
15" (380mm)	10000	99.99%	7-8s





E-380S



E-480S



SEC-S3030C-HMI



JIT Industrial Asia Pte Ltd
JIT Industrial (Vietnam) Co Ltd
Shenzhen - JIT Technology Co Ltd
JIT Technology (Hongkong) Company

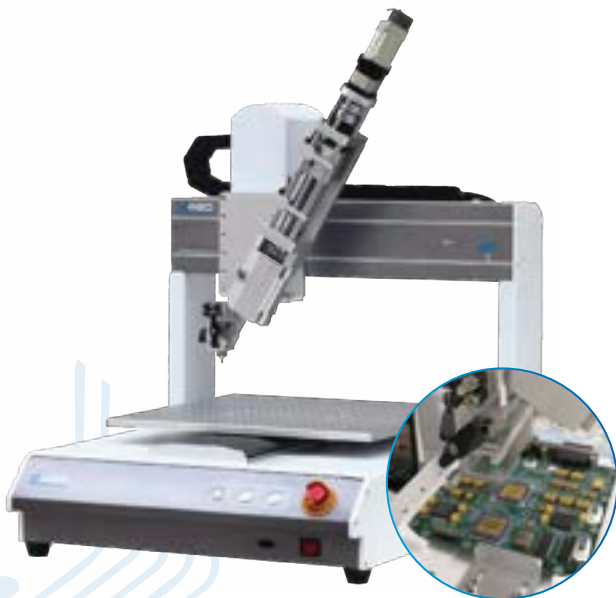




2-parts 50cc servo dispensing machine **SEC-E380S-W**

Smaller size larger stroke.
The glue flow rate is faster and more stable
The glue shaft can be configured according to the size of the glue package.
Suitable for various needs in the dispensing industry

Working range	380(X) 380(Y) 100(Z)mm Customized
Machine dimensions	L520 x W620 x H702mm Customized
Max payload Y/Z	20kg/15kg
Adhesive dispensing method	Servo-motor extrusion
Repeat accuracy	±0.015mm



50ml 2-part adhesive materials servo mixing and dispensing valve **SEC-E480S-W**

Volumetric metering technology to extrude the AB materials out of the containers at a constant speed and with precise dose.
Automatic anti-curing function, which effectively prevent the glue from clogging and blocking the nozzle.
Can chose to work with smart-controller, which can display the current data of dispensing torque, pressure level, automatic speed-switching, and remaining material-level in real time.

Working range	480(X) 480(Y) 100(Z)mm
Machine dimensions	620*683*645 mm
XYZ position accuracy	±0.02mm
Resolution	0.01mm
Dispensing method	SMC needle valve



2-parts automated vacuum casting & encapsulating machine with inline conveyor **SEC-S3030C**

The system includes 2-part automatic material prepping and feeding system.
High degree of automation.
Powerful control system.

Working range	400(X) 300(Y) 100(Z)mm
Machine dimensions (Vacuum host)	1420(L) 1160(W) 2200(H)mm
Mixing & Dispensing accuracy	±2%
Mixing ratio (adj.)	100:100-100:20 or 100:20-100:10 adjustable
Dosing speed	1g/s-10g/s or 5g/s-20g/s or 10g/s-30g/s





VC-450



JIT Industrial Asia Pte Ltd
JIT Industrial (Vietnam) Co Ltd
Shenzhen - **JIT Technology Co Ltd**
JIT Technology (Hongkong) Company



VC—450 Series Atmospheric Pressure Online Plasma Cleaner



BASIC PARAMETERS

Item	VC-450
Machine size	1270*800*1350mm
Guide system	Automatically adjust track width
PCB size(mm) (XY)	50*50-450*400mm
Machine weight(KG)	About 350KG

FUNCTION FEATURES

1. Eliminate static electricity on the surface of the substrate, clean and activate the surface of the substrate, increase the surface energy of the substrate, and improve the adhesion between the adhesive and the substrate
2. The sprayed plasma has a low temperature and does not damage the substrate
3. No arcing, no damage to processed products

APPLICATION

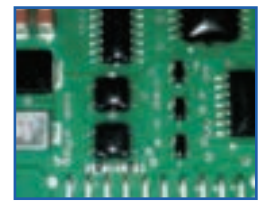
Widely used for surface cleaning and activation of various conductive and non-conductive materials

- 1 Solder boat cleaning and activation treatment before PCB solder paste printing
- 2 Cleaning before PCBA tripartite coating
- 3 Wire Bonding gold finger cleaning and revitalization
- 4 Hydrogen Fuel Stack Bipolar Plate Dispensing Pre-treatment

Wire bonding



Three-proof coating



Dispensing



5G PCB solder paste printing



Hydrophobic coating



Mini LED



APPLICATION SCENARIOS



VECTRON



AP-100



JIT Industrial Asia Pte Ltd
JIT Industrial (Vietnam) Co Ltd
Shenzhen - JIT Technology Co Ltd
JIT Technology (Hongkong) Company



PLASMA AP - 100 SERIES

PARAMETER



- Machine size **232*575*373mm (W*H*L)**
- Machine weight **About 20KG**
- Voltage **220V, 50/60Hz**
- Power **500/800/1000W**
- High voltage frequency **40KHz**
- Working gas **Water-free and oil-free compressed air; optional nitrogen, etc.**

FEATURES

- Multiple heads and different powers can be configured according to the product processing speed required by customers
- Different shapes of nozzles can be configured according to the shape of the customer's products
- Higher and stable discharge voltage ensures consistent concentration of ejected ions
- The ejected ions have a low temperature and will not damage the substrate being processed

SCOPE OF APPLICATION



Mobile phone cover



Camera module



Shoe material adhesive



Box cover pre-painting treatment

AIRBRUSH SELECTION

Rotary spray gun	Processing width diameter: ϕ80mm, optional ϕ60mm, ϕ40mm
Direct injection spray gun	Processing width diameter: 2, 3, 5mm
Fiber cable length	3m, can be customized



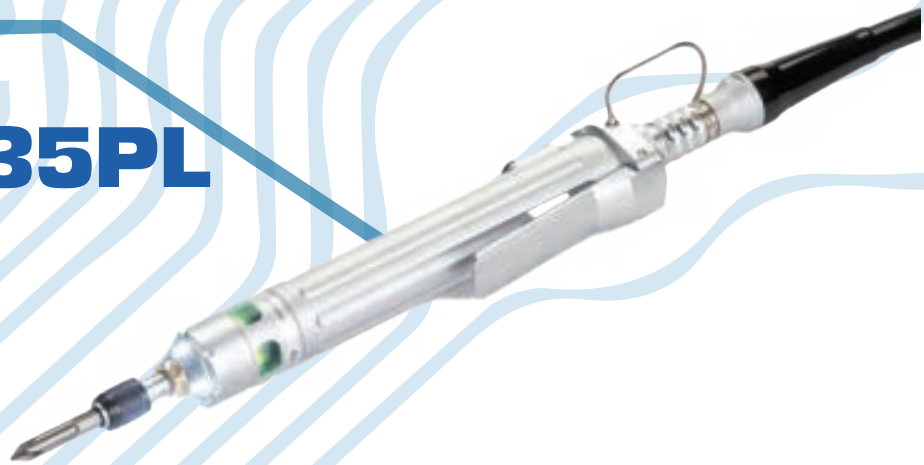
Sealant bonding pre-treatment



Headlight bonding pre-treatment



SD2500 - 35PL



BTL03



ASG-D4



AGS-A15



DTT-30



DTT-30

All ASG-SD2500 Screwdrivers are of light-weight aluminum construction and come standard in the inline configuration, with optional pistol grip and lever triggers.

STANDARD FEATURES

- Forward/Reverse Button
- LED Status Ring – indicates torque/angle high, low, or pass
- High Intensity LED Headlights (not present on fixture mount or angle models)
- Push-to-Start triggering (inline models only)
- 1/4" Hex Quick-Change Chuck (certain models)
- Suspension Bail

OPTIONAL FEATURES

- Throttle Lever
- Fixture Mount Body

DTT-30



- ASG DTT-30 Digital Torque Tester is used for setting, verifying, and measuring torque.
- Equipped with many advanced features including data collection.
- Portable and easy to use
- Can test screwdrivers and manual tools, however, it is not for use with impact tools.
- Perform on-the-spot calibration with torque accuracy of +/- 0.5% full scale.

Brushless motor offers high performance and low maintenance, eliminates carbon dust for cleaner operation

Unit Selector: lbf.in, kgf.cm, and N.m
Carrying case included as standard
1/4" hex drive and autolock bit holder
± 2.5% accuracy
CW

Automatically resets for next fastener when torque is reached
Manufactured to meet or exceed the accuracy and repeatability requirements of ISO 6789:2003 and ASME-B107.14-2004

BT103



ASG-D4



AGS-A15



☎ (+65) 9299 4685
✉ contact@jit-asia.com.sg
🌐 www.jit-asia.com





JDM-20LE



JIT Industrial Asia Pte Ltd
JIT Industrial (Vietnam) Co Ltd
Shenzhen - JIT Technology Co Ltd
JIT Technology (Hongkong) Company



JDM Brushless Electric Srewdriver






Model		JDM-10LE	JDM-20LE
Electrical Input		DV-36V	
Torque	(kgf.cm)	10-Jan	20-Mar
	(lbf.in)	0.88-8.8	2.64-17.6
	(N.m)	0.1-1	0.3-2
Torque accuracy		±3%	±3%
Torque adjustment		Not applicable	Not applicable
Start/Stop application		Manual Switch	Manual Switch
Idle speed (r.p.m)		1000	1000
Weight (g)		530±50	530±50
No-load current (A)		0.4A	0.4A
Usable Driver Bits		5	5
Applicable Bits Diameter	Screw treads for metal	1.6 3 0	2.3-4.0
	Screw treads for non-metal	1.6 2 6	2.3-3.8

PRODUCT FEATURES

- ESD anti-static shell
- Ground resistance <math>< 2\Omega</math>
- Imported carbon brushless motor, powerful performance, high stability, long service life
- Low vibration, low noise, low electromagnetic interference, in line with environmental protection requirements, especially suitable for dust-free working environments.
- The internal stop device adopts a magnetic induction system with high sensitivity, instantaneous braking and low impact
- Internal gear components are directly stamped from high-quality alloy steel, which is more durable and stable
- The shell is designed according to ergonomic grip, compact in size, light in weight, impactresistant, comfortable to use, not easy to fatigue after long-term use, and improves production efficiency
- Rotation 1000rpm



 (+65) 9299 4685
 contact@jit-asia.com.sg
 www.jit-asia.com





Autofeeding Screwdriver System
YH-T20



JIT Industrial Asia Pte Ltd
JIT Industrial (Vietnam) Co Ltd
Shenzhen - JIT Technology Co Ltd
JIT Technology (Hongkong) Company

Autofeeding Screwdriver System

YH-T20



Machine gross weight	Feeder 16.5KG
Dimensions	Supply material 36*30*26CM
Power supply	220V 50Hz
Gas source	0.5-0.6Mpa
Power	About 150W
Screw specifications	M2-M4
Silo capacity	M3*10≥3000pcs
Feeding speed	0.5-0.75s/piece
Conveying distance	2-4 meters

FEATURES

- Use dual sensors to ensure no duplicate feeding.
- 100% no jamming of materials.
- The turbine feeding method is used with smaller volume and noise, and the maintenance is more convenient.
- The material box is made of metal and has a long wear-resistant life, reducing damage to the screw coating and can be placed on the workbench or under the table to save space.
- Comes with Intelligent alarm function for material shortage.

Customization



Robot-Assisted screwdriver Systems



Desktop screwdriver system with screw feeders



Y-axis desktop screwdriver system



☎ (+65) 9299 4685

✉ contact@jit-asia.com.sg

🌐 www.jit-asia.com





WT1014



WT1010H



JIT Industrial Asia Pte Ltd
JIT Industrial (Vietnam) Co Ltd
Shenzhen - JIT Technology Co Ltd
JIT Technology (Hongkong) Company



WT1014

Advantages of WT products

- 1 Backward compatible
- 2 It can support WSD/WD matching soldering pens (except micro soldering pens) with the same power and can support the connection and use of multiple tools.
- 3 No need to repurchase usable soldering pens.



Power unit, 1 channel digital 90 W

- Power unit, 1 channel with soldering iron WSP 80 Robust and safety rest WSR 201
- WSP 80 Robust soldering iron for all

Scope of supply	Order No.	Model	Description
	T005 15 175 99	WSR 201	2-in-1 safety rest with metal wool brass and sponge
	T005 29 193 99N	WSP 80 Robust	Soldering iron robust 80 W, 24 V with SilverLine Heating Technology
	T005 34 346 99	WT 1	Power unit with I channel, 90 W
	T005 44 405 99	LTB	Soldering tip, chisel, Ø 2.4 x 0.8 mm

WT1010H



Power unit, 1 channel digital 150 W

- Power unit, 1 channel with soldering iron WP 120 Robust and safety rest WSR 201
- Order No. T005 34 386 99 applications, robust version

Scope of supply	Order No.	Model	Description
	T005 15 175 99	WSR 201	2-in-1 safety rest with metal wool brass and sponge
	T005 29 193 99N	WP 120	Soldering iron 120 W, 24 V with PowerResponse Heating Technology
	T005 34 346 99	WT 1H	Power unit with 1 channel, 150 W
	T005 44 405 99	XT B	Soldering tip chisel Ø 2.4mm





HIGH-EFFICIENCY CONSTANT TEMPERATURE SOLDERING STATION



JIT Industrial Asia Pte Ltd
JIT Industrial (Vietnam) Co Ltd
Shenzhen - JIT Technology Co Ltd
JIT Technology (Hongkong) Company



High-efficiency constant temperature soldering station

FEATURES

- Rotary temperature control, convenient and fast
- Standard plug-in heating core, easy to replace and maintain
- High-temperature resistant, lightweight-design handle with longer service life
- Split design, multiple options of soldering tips, easy to replace
- With CAL temperature calibration hole, the temperature can be calibrated
- Two temperature scales, Celsius/Fahrenheit, easy to use

969A



Specifications

Model	969A	969D
Voltage	AC220/50Hz	AC220/50Hz
Operating temperature range	200~480°C	200~480°C
No-load standby Power	≤5	≤5
Maximum instantaneous power	75W	75W
Temperature stability (no load)	±2°C	±2°C

Model	969A	969D
Soldering iron resistance to the ground	<2Ω	<2Ω
Soldering iron potential to the ground	<2mV	<2mV
Temperature correction method	Potentiometer calibration	Digital correction
Dimensions	L141*W112*H86mm	L141*W112*H86mm
Weight	1.8KG	2KG

FEATURES

- The temperature can be adjusted by ±1 C by digital display
- Standard sleep function, it will enters the sleep standby state after 20 minutes of non-use
- High-temperature resistant handle for longer service life
- Split design, multiple options of soldering tips, easy to replace
- Celsius/Fahrenheit can be freely switched and sleep state can be turned on/off

969D



(+84) 348 100 358

info@jitvietnam.com

www.jit-asia.com



ELECTRONIC HAND TOOLS



Electronic hand tools



Ideal for hard-to-reach areas and delicate electronics applications thanks to its compact size and light, ergonomic design

CUTTER

Come with short serrated jaws, suitable for gripping any type of components



PLIERS



Come up with short flat tips made of Carbon steel; suitable for microelectronics applications

CUTTING TWEEZERS

SHEARS AND WIRE STRIPPERS

Very strong all-purpose tool. It can be used as: Shears, Multi-diameter Wire stripper and Pliers



(+84) 348 100 358

info@jitvietnam.com

www.jit-asia.com





**ELECTRONICS
CHEMICAL**

**INDUSTRIAL
CHEMICAL**

**OEM
CHEMICAL**

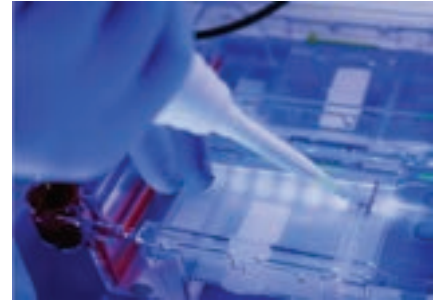
IBOND is a leading adhesive solution provider based in Singapore with over 30 years of experience in the electronics industry. Specializing in a wide range of adhesive solutions, **IBOND** offers comprehensive services from electronics adhesives to industrial adhesives. With a commitment to quality and innovation, **IBOND** serves as a trusted partner for businesses seeking reliable adhesive solutions tailored to their specific needs



Ibond

ELECTRONICS CHEMICAL

Featuring conformal coating, thermal coating, silicone, and UV adhesive solutions. Our products offer reliability and performance for electronic application



INDUSTRIAL CHEMICAL



Ideal for construction, furniture, paper, clothing, and shoe industries. Quality solutions for diverse applications

OEM CHEMICAL

Custom Formulations Quality Assurance Technical Support Flexibility in Packaging Research and Development (R&D) Capabilities Collaborative Partnership



(+84) 348 100 358

info@jitvietnam.com

www.jit-asia.com





THERMAL GREASE

THERMAL GEL



THERMAL POTTING ADHESIVE



JIT Industrial Asia Pte Ltd
JIT Industrial (Vietnam) Co Ltd
Shenzhen - JIT Technology Co Ltd
JIT Technology (Hongkong) Company



THERMAL GRREASE



Features and Applications

- Heat dissipator and base plate connector act as the caulk material between the heat source and heat dissipator.
- Focus on thermal conductivity, also pays attention to the performance of low thermal resistance, and improves the brushing process, which can improve the operability during production.
- Can be used in the long-term with excellent stability for high and low temperature.

THERMAL POTTING ADHESIVE



Features and Applications

- It is used when potting requires high heat conduction.
- Focusing on thermal conductivity and also improve the fluidity so that the glue can indeed fill all the spaces
- Can be used in the long-term with excellent stability for high and low temperature.



THERMAL GEL

Features and Applications

- Heat dissipator, base plate connecting, 5G communication, new energy and battery pack, act as the caulk material between the heat source and heat dissipator.
- Can be dispensed for different sizes and thicknesses
- Focusing on thermal conductivity and also improve the specific gravity so that the weight of the product used can be controlled
- Can be used in the long-term with excellent stability for high and low temperature.





JIT INDUSTRIAL (VIETNAM) CO. LTD

The best choice for labor insurance is JIT



Scan QR code to learn more product

- ELECTROSTATIC CLOTHING SERIES-



Anti-static Coat



Two Piece Top



One-piece Hoodie



Split Hoodie



Anti-static Two-piece Suit



Small Work Hat



Big Work Hat

- COTTON GLOVES SERIES-



Ultra-thin



Thin 14kg



Medium thick 18kg



Thick 23kg



Extended And Thickened



Dust-free Cloth Gloves



Extra Thick Double-sided Cotton Gloves

- STATIC CLOTHING SHOE SERIES-



PVC Four-hole Shoes



SPU Four-hole Shoes



PU Four-hole Shoes



Mid Towel Shoes



PVC Mesh Shoes



SPU Mesh Shoes



Mid Towel Cotton Shoes



Soft Sole High Shoes



Hard Sole High Shoes



PVC Slippers



SPU Slippers Black



SPU Slippers Blue



Top-covered Four-hole Slippers



SPU Six Hole Slippers

- SHOE COVER SERIES-



PE Thin Shoe Cover 1g



PE Thick Shoe Cover 1.5g



PE Extra Thick Shoe Cover 3g



Non-woven Shoe Cover 300g



Non-woven Shoe Cover 400g



Static Cloth Shoe Cover



Static Cloth Sleeves



JIT INDUSTRIAL (VIETNAM) CO. LTD

The best choice for labor insurance is JIT



Scan QR code to learn more product

- HEADGEAR SERIES -



19 inch Blue Bar Hat With Single Rib



19 inch White Bar Hat With Single Rib



21 inch Pink Hat With Double Ribs



21 inch Blue Bar Hat With Double Ribs



Bar Cap Medical Extra Thick



Shower Cap



Earmuffs

- DISPOSABLE GLOVES SERIES -



Disposable Blue Nitrile Gloves



Disposable White Nitrile Gloves



Disposable Thickened Blue Nitrile Gloves



Disposable Latex Gloves



Disposable PVC Gloves



Disposable PE Gloves 100 pieces



Boxed PE Gloves Extra Thick 200 pieces

- LABOR PROTECTION GLOVES SERIES -



Cotton Gauze Gloves



Nylon Gloves



PU Coated Finger Gloves



PU Coated Palm Gloves



PU Glove Core



Nitrile Blue Rubber Gloves



Nitrile Black Rubber Gloves



Foam King Green Gloves



Foam King Blue Gloves



Tendon Yellow Gloves



Tendon Black Gloves



Tendon Red Gloves



Transparent Dishwashing Gloves



Acid And Alkali Resistant Gloves

Dust-free cloth / paper series

Sticky Pad Roller Series

Mask Series

Finger Cot Series

Anti-static Gloves Series





MICROELETRONIC SOLDERING MATERIALS

- Solder Paste
- Solder Wire
- Solder Paste
- Solder Wire



MICROELETRONIC AUXILIARY SOLDERING MATERIALS

- Flux
- Cleaner
- Diluent
- Conformal Coating








OTHERS

- Thermally-Conductive Materials
- Electronic Glue
- Solder Ball



KEY FEATURES

- Cold-free 
- Ultrafine Powder 
- Halogen Zero 
- Low void 
- Low Temperature 

SOLDER PASTE



FLUX

FEATURES

- **Universal flux**
 1. Excellent tin permeability
 2. Minimal residue
 3. Good cleaning properties
 4. High insulation resistance
 5. Reliable electrical performance
- **VOC-free flux**
 1. Safety, VOC-free
 2. Non-flammable
 3. Minimal residue
 4. Good cleaning properties



APPLICATIONS



Consumer Electronics



LED



Smart appliances



Communication



IT



Industrial Control



PV



Automotive Electronics



Security



AI





SOLDER WIRE



SOLDER BAR



JIT Industrial Asia Pte Ltd
JIT Industrial (Vietnam) Co Ltd
Shenzhen - JIT Technology Co Ltd
JIT Technology (Hongkong) Company



Solder wire and solder bar

Features



- **Advanced Flux Technology**
Utilizes high-tech formula flux for superior performance in soldering
- **Fully Automatic Production Line**
Ensures precision and consistency in solder wire production
- **Variety of Options**
Offers solder wires with tin content and diameters ranging from $\phi 0.4\text{mm}$ to $\phi 3.0\text{mm}$
- **Multiple Rosin Core Types**
Available in R (rosin flux), RMA (weakly active rosin flux), and RA (active rosin flux) for various soldering needs
- **High Quality and Versatility**
Fast wetting speeds, minimal spatter, and versatile applications to meet the demands of modern electronics and welding processes

SOLDER WIRE

SOLDER BAR

Features

- **High Temperature and Oxidation Resistance**
Maintains a silvery white, mirror-like surface at high temperatures with minimal dross due to unique anti-oxidation properties
- **Excellent Fluidity and Soldering**
Ensures smooth, simple soldering with bright, full joints and no false soldering, even after high-temperature paint removal
- **Enhanced Reliability**
Copper addition reduces Sn to copper corrosion, improving solder reliability
- **RoHS Compliant**
Suitable for wave soldering or hand dipping, meeting lead-free RoHS standards
- **Pure Tin, Less Waste**
Made from pure tin, it generates less tin dross, reducing waste and featuring strong antioxidant capabilities

PRODUCT APPLICATION



Communication equipment



Medical Equipment



Digital Appliances



Automotive Electronics




Photoelectric lighting




Semiconductors



 (+84) 348 100 358

 info@jitvietnam.com

 www.jit-asia.com





FUME EXTRACTOR



JIT Industrial Asia Pte Ltd
JIT Industrial (Vietnam) Co Ltd
Shenzhen - JIT Technology Co Ltd
JIT Technology (Hongkong) Company



FEATURES

- Quickly eliminate static electricity
- Ion balance indicator light
- There are special ion emitter needle cleaners equipped with over-fillers for customers to choose
- Small size, light weight, portable design, adjustable angle
- Can install a cold air heating device if required
- Good grounding protection function

SPECIFICATIONS

Input voltage: 220V/50Hz or 110V/60Hz
Power: 40W
Air volume: 45-110CFM
Ozone concentration: ≤0.03ppm
Dimensions: L190*W85*H240mm (including the bracket)
Output voltage: AC 5.6KV
Ion balance: ≤|10V| (300mm from the test center in front of the fan)
Noise: 45-55dB
Gross weightl: About 2.8KG



ST001

<i>Model</i>	200XP-A
Output voltage	AC 110V/220V
Power consumption	150W
Air inlet interface	φ50/φ75
System traffic	300m ³ /h
No. of filter element layers	3 layers, customizable
Noise	<50dB
Pipe length	1.4m (customizable)
Filtering effect	>0.3um 9.99%
Host size	280*250*280mm
Weight	15KG

SPECIFICATIONS

200XP-A



FEATURES

- Full metal chassis design can resist strong impact and vibration
- Air inlet diversion design improves the purification efficiency of filter core
- Fatigue-resistant brushless motor, low noise, high speed and long life
- Aircraft grade aluminum volute impeller for stable airflow and smooth operation
- Multi-stage filtration design ensures thorough filtration of harmful substances, reduces environmental pollution

