



WELCOME

YOUR TRUSTED ONE-STOP INDUSTRIAL SOLUTION PROVIDER



SMART
TECHNOLOGY



ADVANCED
AUTOMATION



GLOBAL
PARTNERSHIP

Visit our website

jit-asia.com | smt-mall.com



ABOUT US

JIT Industrial Asia Pte Ltd is a Singapore-based company with subsidiaries in China, Hong Kong, Vietnam, and India. Our founder entered the China market in 1990, at a time when it was the designated manufacturing base of the world. He introduced world-renowned brands for the electronic assembly industry, and over the past 30 years, we have gained valuable knowledge and experience by providing professional support to PCB assembly factories of all sizes. We have been growing alongside our clients, and our core mission is to offer a complete range of chemical auxiliaries, supporting equipment, and solutions for the electronics industry.

VISION

To become the leading provider of comprehensive solutions and services in the electronics industry, recognized for our commitment to quality, reliability, and customer satisfaction.

MISSION

To continue providing high-quality professional support and solutions to PCB assembly factories of all sizes, while expanding our reach to new markets in the electronics industry. We will achieve this by continuously improving our product offerings and services, building strong relationships with our partners, and leveraging innovative technologies to drive growth and sustainability.

- Website: jit-asia.com | smt-mall.com
- Email: info@jitvietnam.com
- Hotline: [+84] 34 810 0358



Website



Zalo



Whatsapp



GLOBAL PRESENCE, LOCAL SUPPORT

Headquarter & Regional Offices



Global Business Network



Local Sales & Technical Support



Fast Response & After-Sales Service



Engineering Expertise



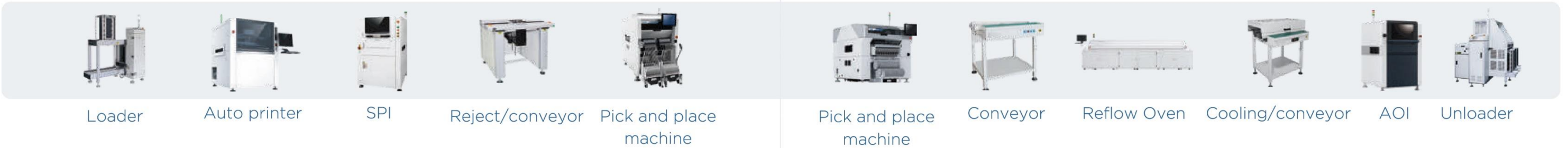
Regional Inventory & Logistics



One-Stop Industrial Solutions

TOTAL SOLUTIONS

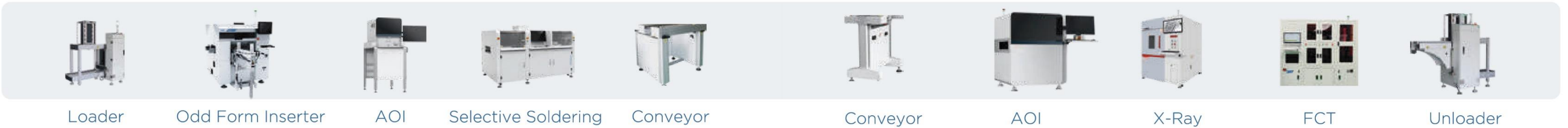
SMT line



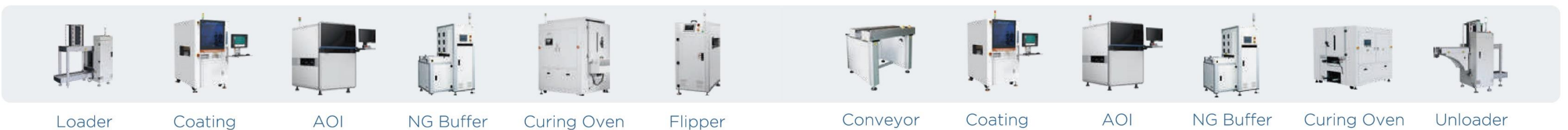
DIP line



Selective AI line



Coating line



WHAT WE OFFER

1. Surface treatment solutions

2. Cleaning solutions

3. Dispensing solutions

4. Counter & Inspection solutions

5. Soldering solutions

6. Depaneling solutions

7. Assembling solutions

8. Chemicals & Materials

9. Soldering materials

10. FMCG products

11. Green packaging solutions

12. Smart factory solutions

1. SURFACE TREATMENT SOLUTIONS

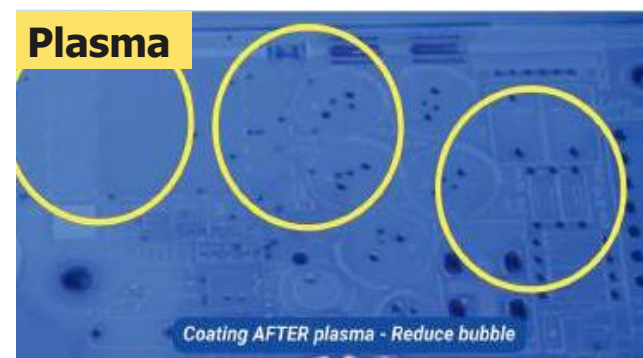
Enhancing surface energy and bonding reliability while minimizing ESD and defects.



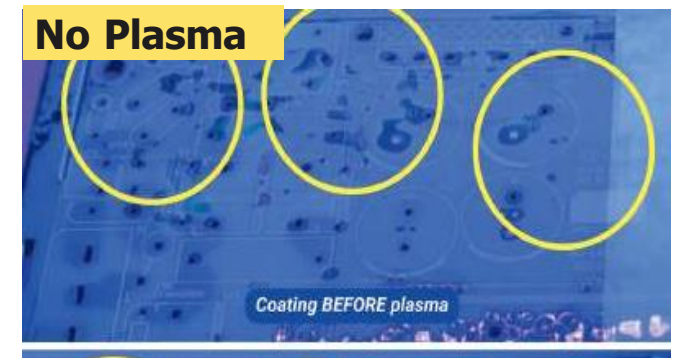
Better ink adhesion



Neutralize ESD



Coating AFTER plasma - Reduce bubble



Coating BEFORE plasma

Contact angle measurement

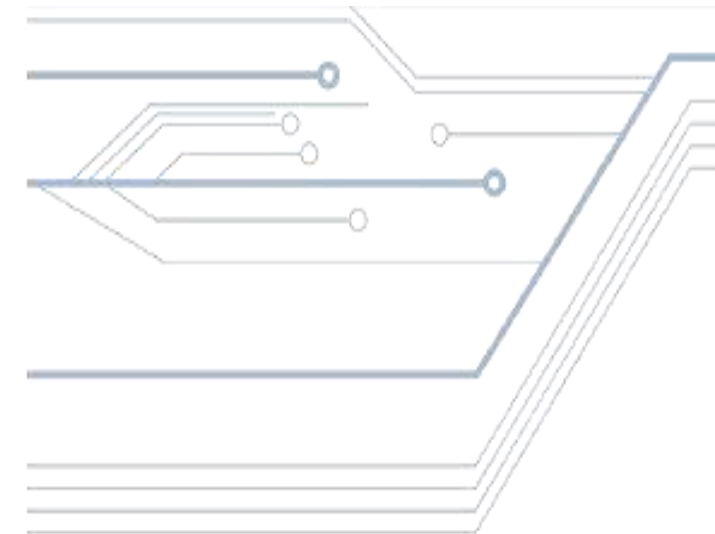
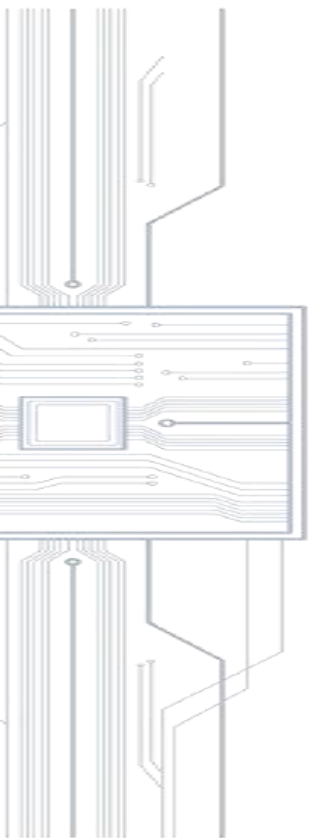
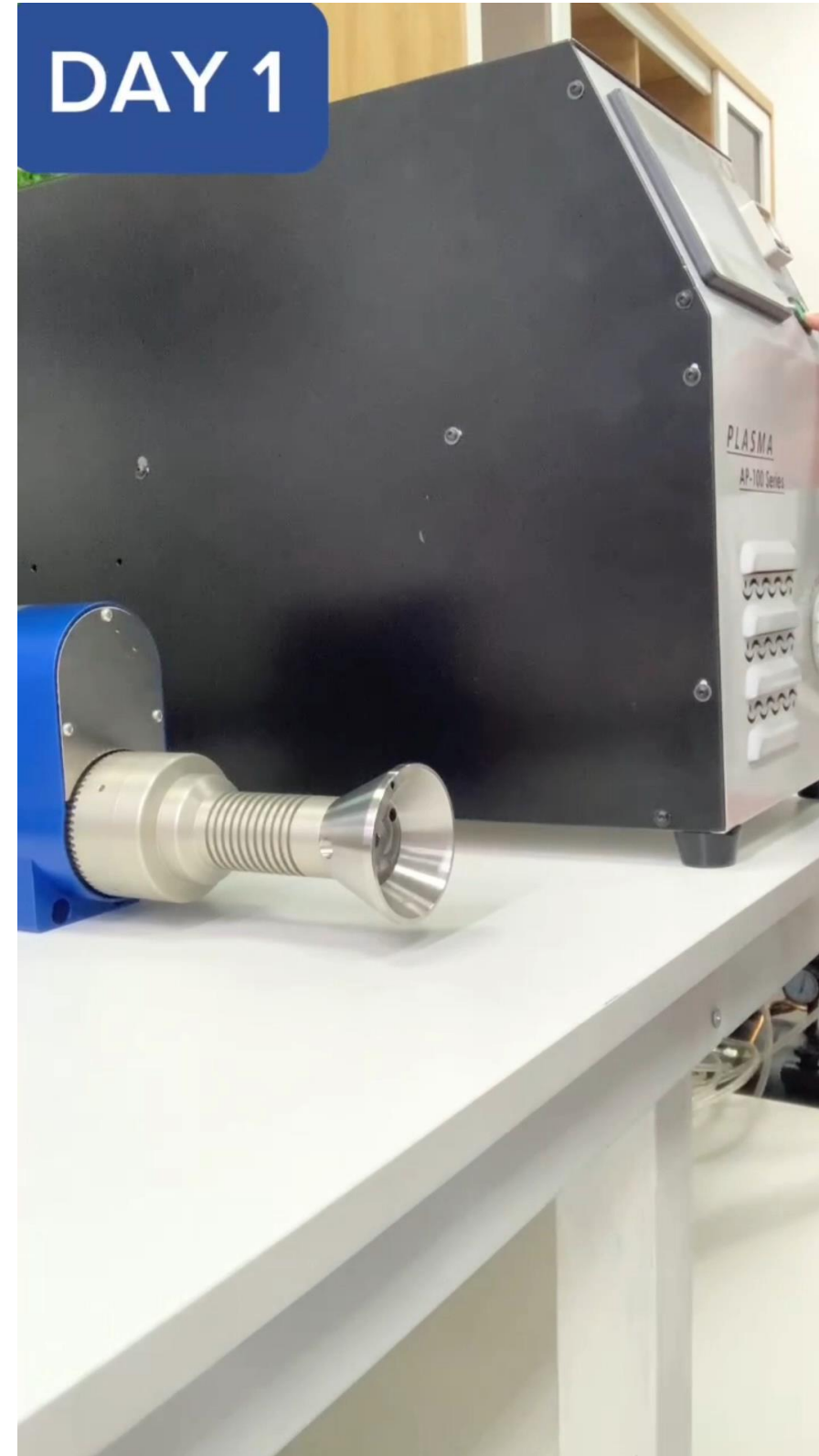
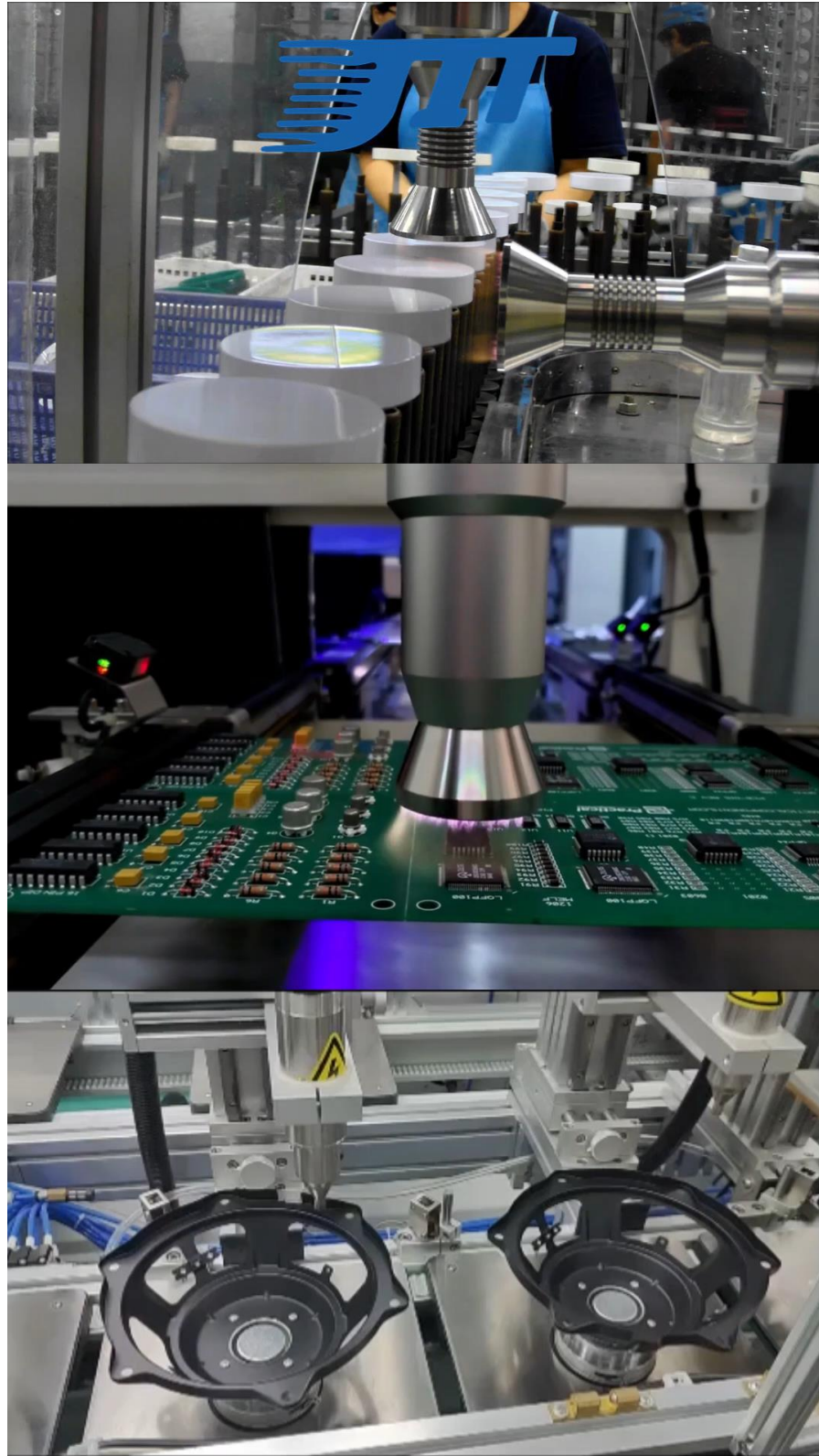


Contact angle measurement



1. SURFACE TREATMENT SOLUTIONS

Application in the production line



2. CLEANING SOLUTIONS

Precision cleaning for flux, solder ball and residue
without surface damage and no chemical use



The advertisement for the dry ice cleaning machine features a central image of the machine, labeled 'JIT DRY ICE CLEANING MACHINE' and 'JIT C1'. To the left, two inset images show a green PCB before and after cleaning, with a red arrow indicating the transition. Above the machine, a circular inset shows 'Dry ice' pellets. The machine is a white and black unit on wheels with a control panel on top.

Dry ice cleaning machine

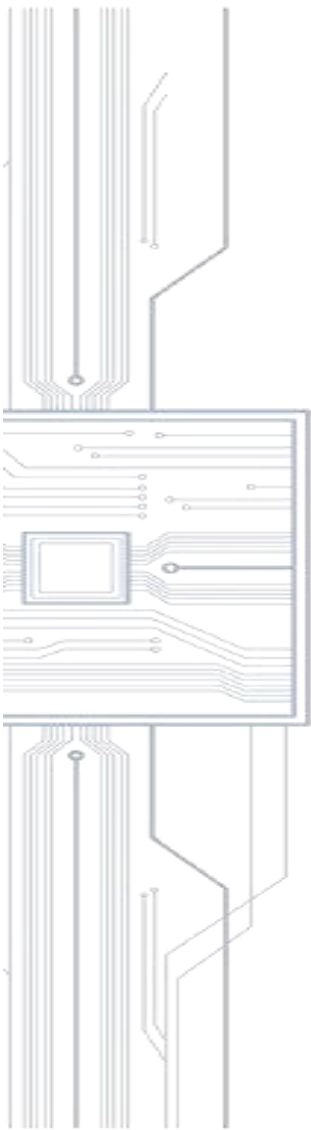
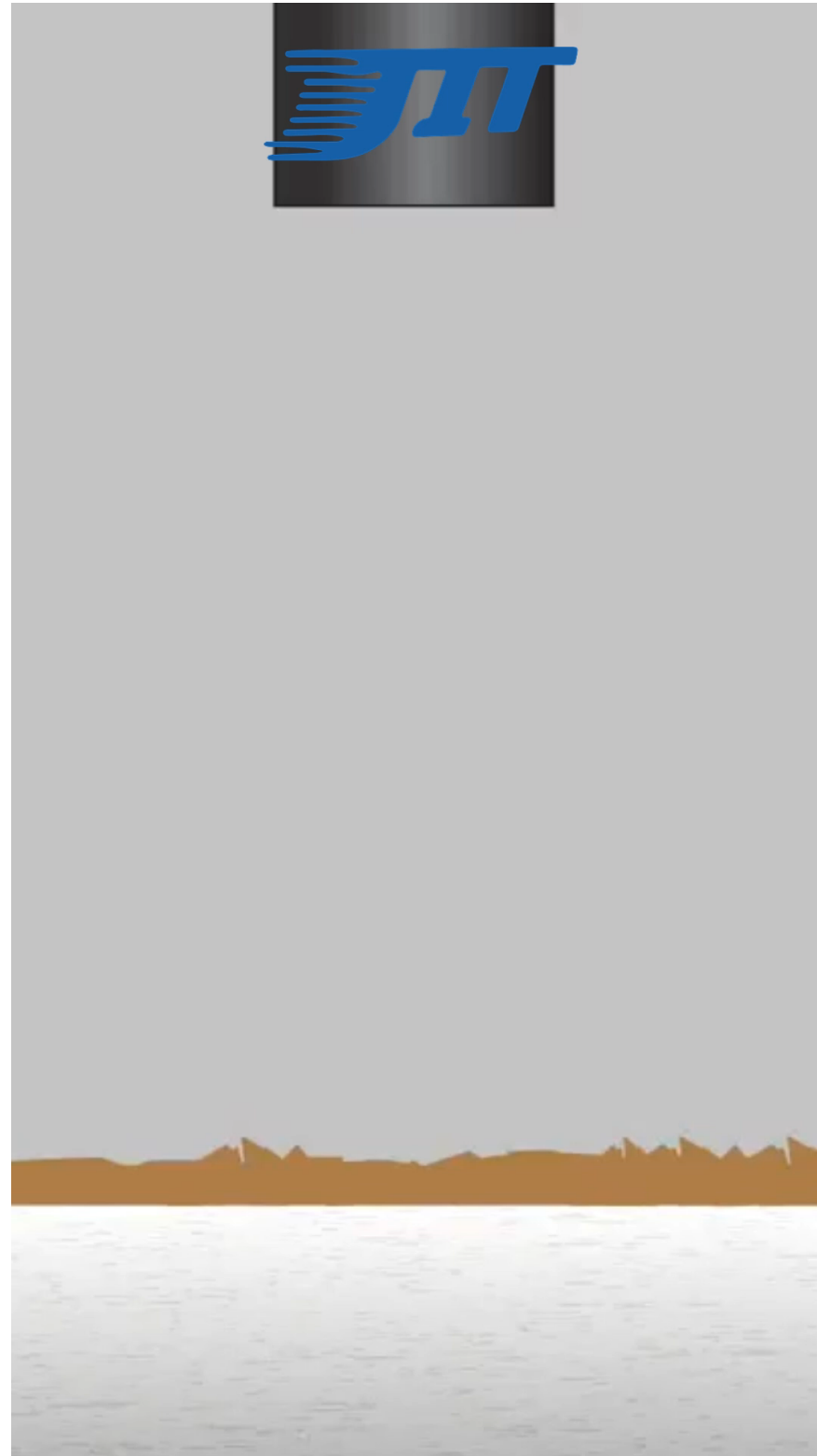


The advertisement for the CO2 liquid cleaner features a central image of the machine, labeled 'Safe for Sensitive & High-Precision Components'. To the left, two inset images show a camera lens before and after cleaning, with a red arrow indicating the transition. The machine is a white unit with a control panel on top, featuring a pressure gauge, a regulator, and a vent. The text 'Safe for Sensitive & High-Precision Components' is prominently displayed above the machine.

CO2 liquid cleaner

2. CLEANING SOLUTIONS

Application in the production line



2. CLEANING SOLUTIONS

Application in the production line

1. Test Sample



- Strictly Confidential -



info@jitvietnam.com



[+84] 34 810 0358



jit-asia.com | smt-mall.com

3. DISPENSING SOLUTIONS

Consistent dispensing volume, minimal material waste, and faster cycle time.

Application in the production line



Desktop dispensing machine



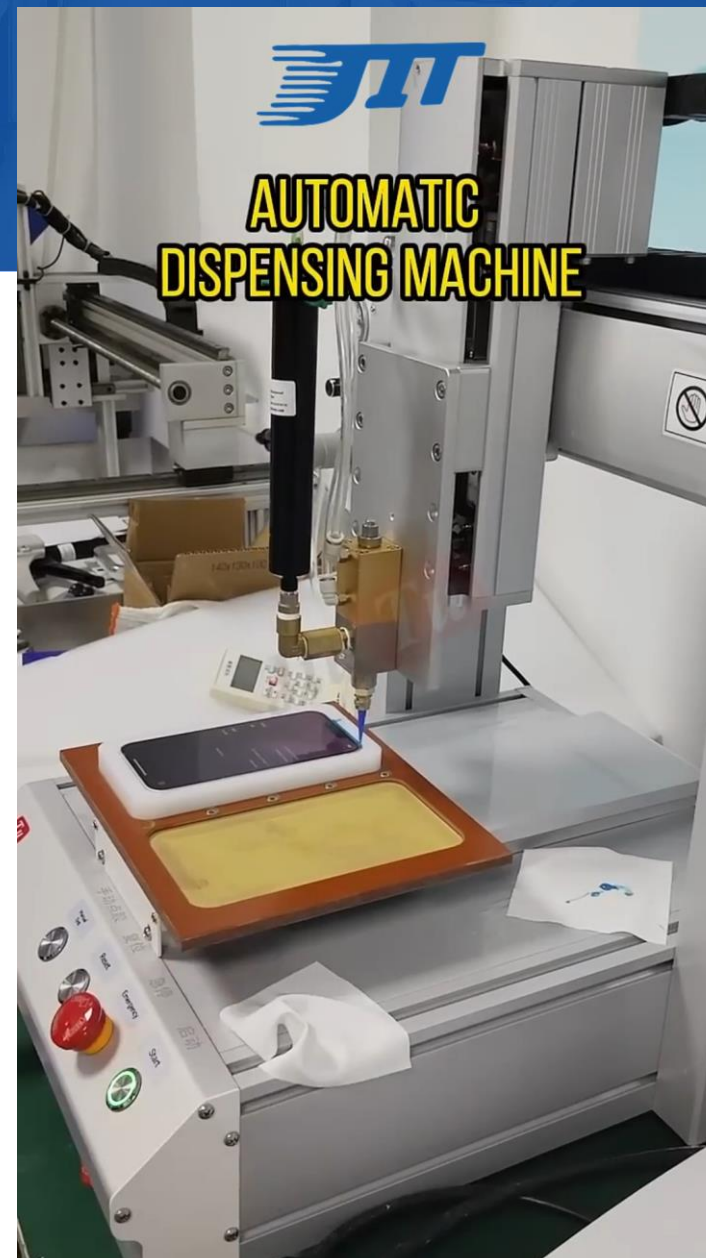
Glue potting machine



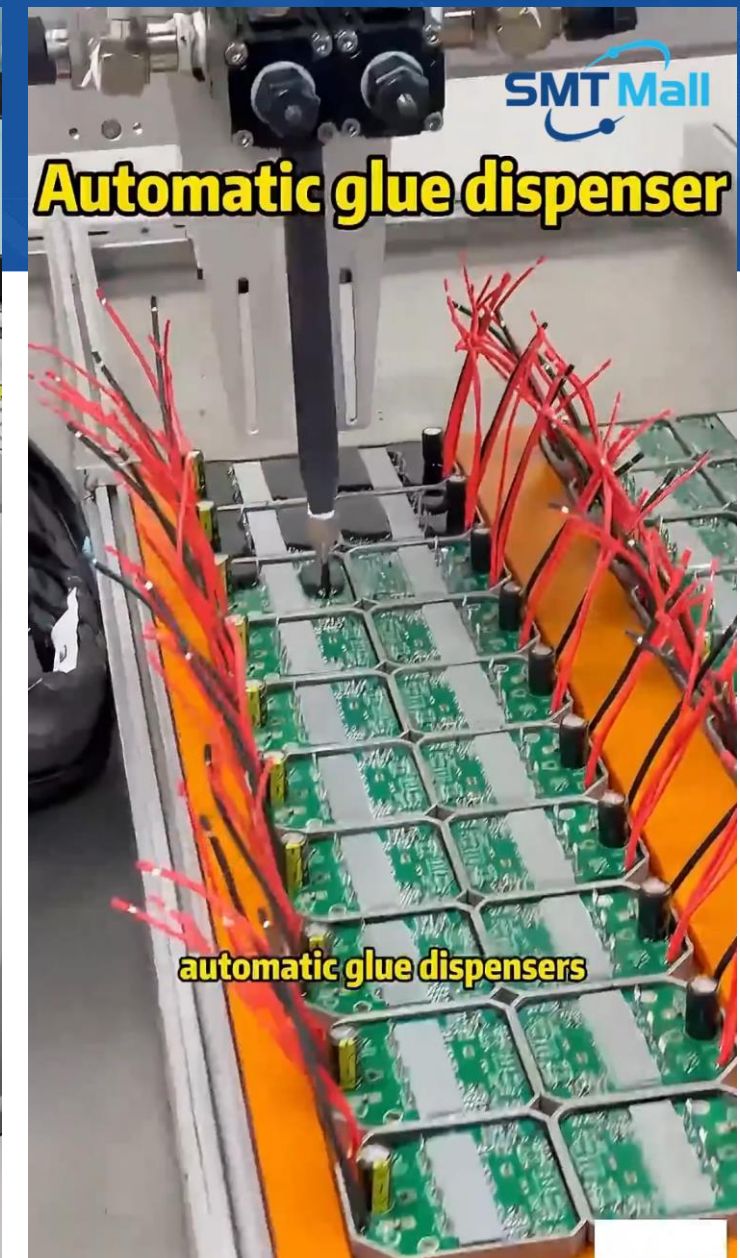
Jet dispensing machine



Inline coating machine



AUTOMATIC DISPENSING MACHINE

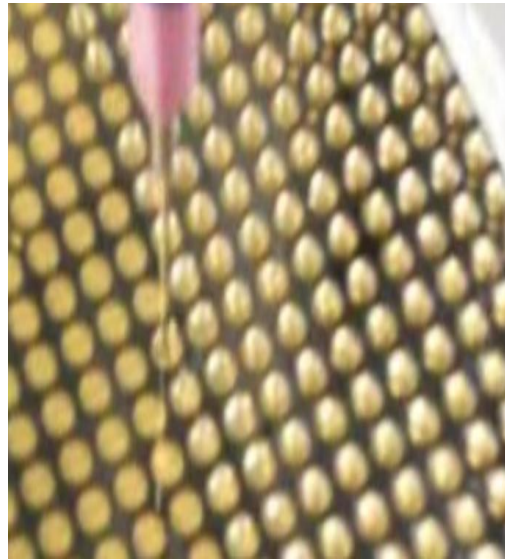


Automatic glue dispenser

automatic glue dispensers

3. DISPENSING SOLUTIONS

Dispensing application



Resin



Hot Melt Glue



Epoxy



Silica Gel



SMT



UV Adhesive



Structural Adhesive



Thermal Grease

4. COUNTER & INSPECTION SOLUTIONS

Ensure component accuracy and defect detection through advanced vision systems.

Application in the production line




BGA solder bridge

Cable

Inductor

Diode

Automated X-Ray inspection



Count 0402 reels in seconds!

MODE: STANDARD
COUNT: 7
PITCH: 2

一次点4盘需要多长的时间



Data analysis

Adjust algorithm

Deep learning

Test & update

Complex tall parts 2761

Ultra-fast speed
6 seconds/reel

Image Processing & Counting

24" LCD

IPC Host

X-ray Tube

Housing, Shielding Radiation

X-ray

Reel

Reel

Reel

Table

Flat Panel Detector

RAW Image

X-Ray counter

5. SOLDERING SOLUTIONS

From desktop to selective wave – complete control over soldering performance.

Application in the production line



1 second for minimum 2 soldering points



USB soldering machine



Desktop soldering machine



Desktop selective soldering machine



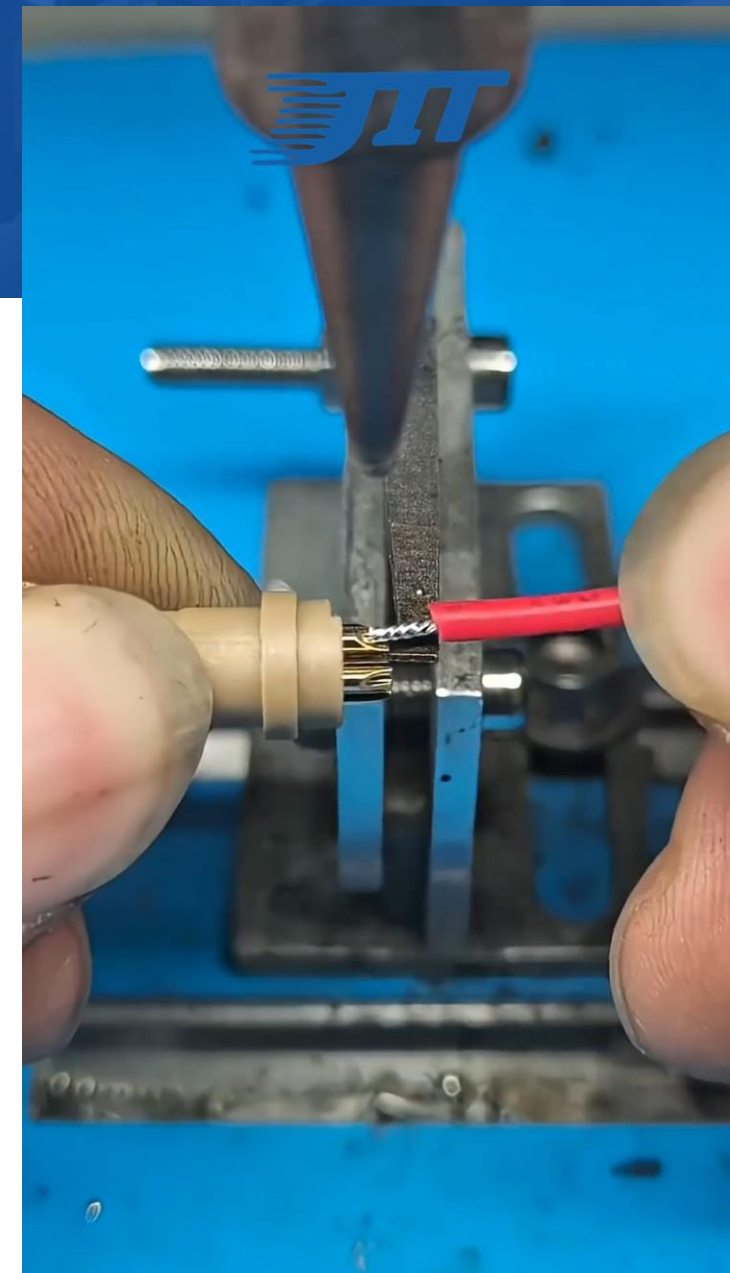
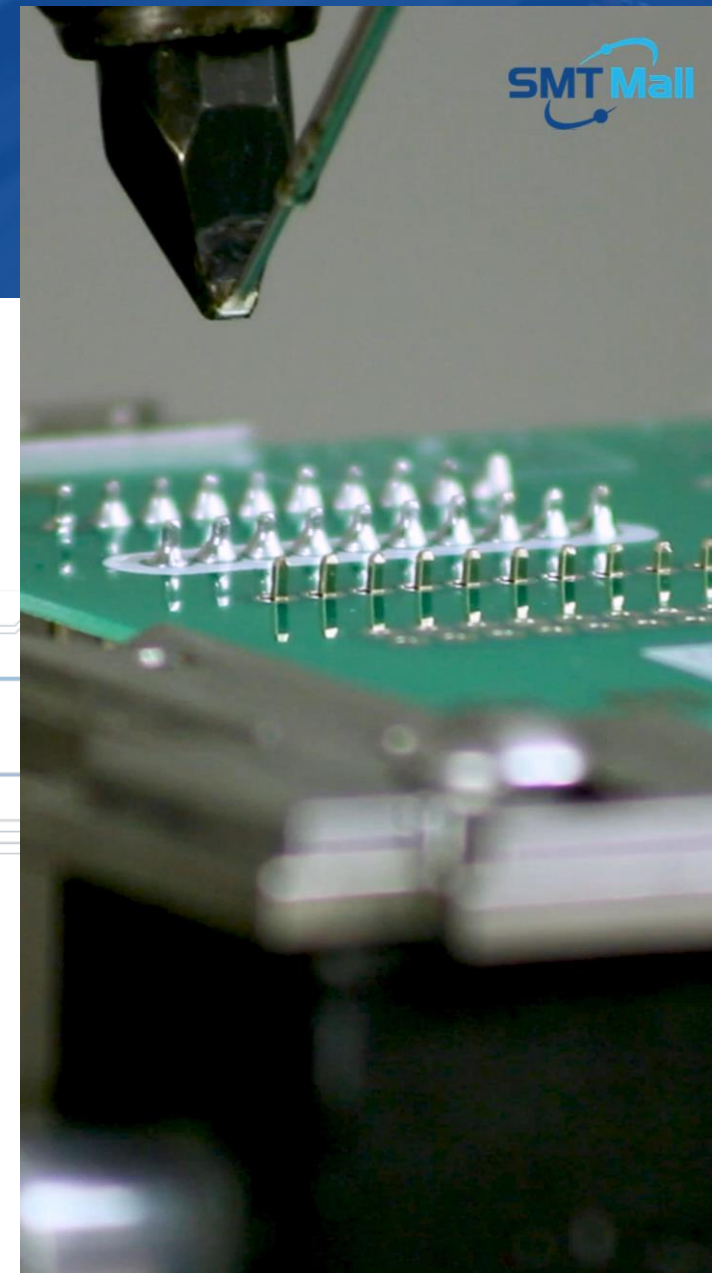
Selective wave soldering machine



Semi-auto wave soldering machine



Wave soldering machine



info@jitvietnam.com



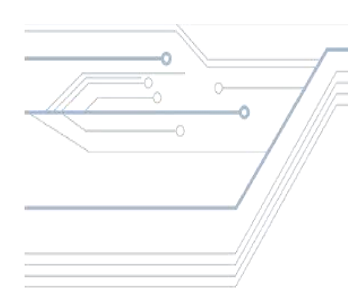
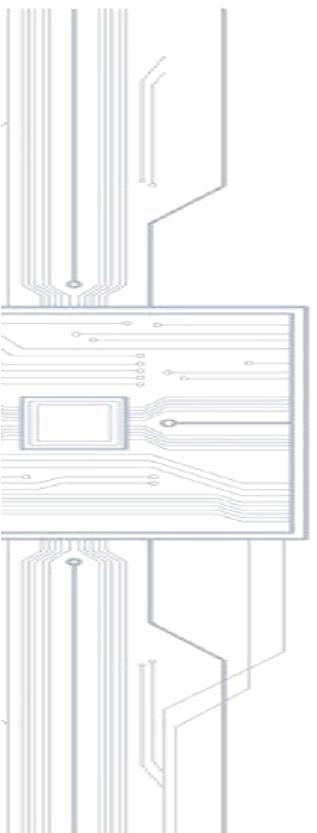
[+84] 34 810 0358



jit-asia.com | smt-mall.com

5. SOLDERING SOLUTIONS

Application in the production line



6. DEPANELING SOLUTIONS

Precise PCB separation without microcracks or thermal damage.



Manual PCB router



Offline PCB router

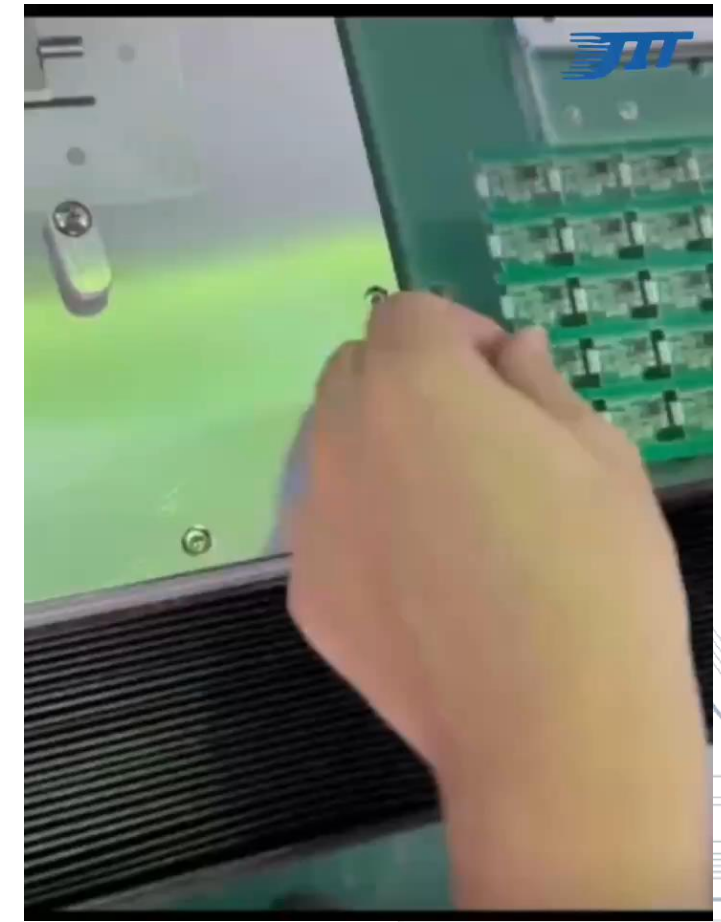


Inline PCB router



PCB laser cutting machine

Application in the production line



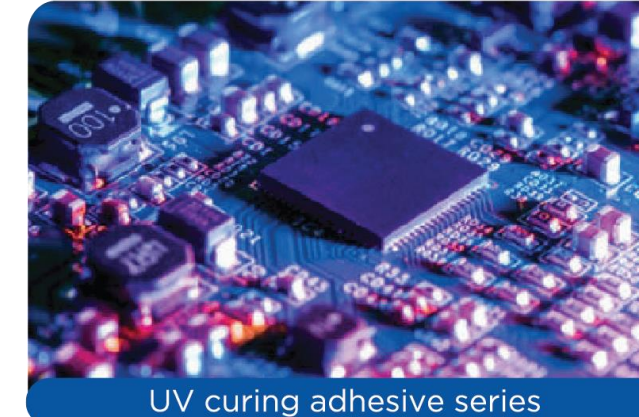
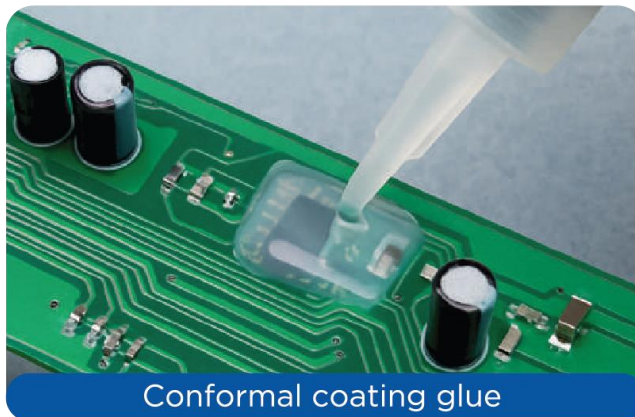
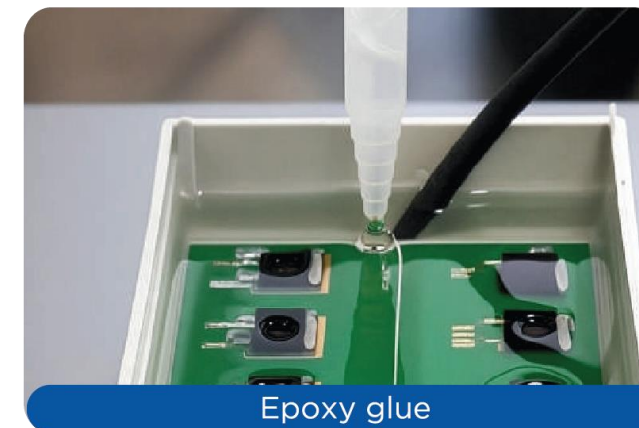
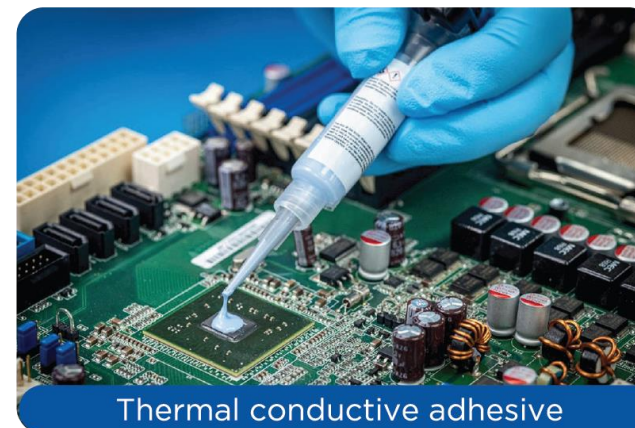
7. ASSEMBLING SOLUTIONS

Precision assembly systems for consistent force, position and productivity



8. CHEMICALS & MATERIALS

Materials engineered for adhesion, protection,
and long-term reliability.



TOTAL ADHESIVE SOLUTION

PROVEN PERFORMANCE. COMPETITIVE PRICING. TRUSTED PARTNER.



TUFFY GLUE (TF-323 SERIES)

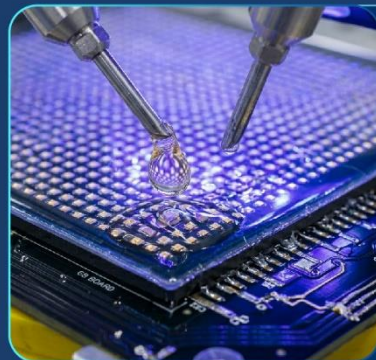
LCD DISPLAY FIELD

Peel & repair with zero residue - easy rework, no mess left behind

Boil-resistant bond - withstands 8+ hrs in boiling water after full cure

ITO-safe formula - ultra-low sodium & chloride ions prevent circuit corrosion

APPLICATIONS LCD Sealing, OCA Bonding, Edge Seal



GOB ENCAPSULANT (IBM-ER3010)

LED DISPLAY FIELD

Full LED chip protection - guards against impact, dust, and moisture

Crystal-clear, color-neutral - no yellowing, no optical distortion

Low shrinkage & heat-resistant - stable performance across wide temperature ranges

APPLICATIONS LED Module, Billboard, Indoor Screen



CONFORMAL COATING (CC-UV100 / CC-PU100)

PCB PROTECTION

Moisture & fungus barrier - long-term PCB protection in harsh environments

Wide thermal range - stable from -50°C up to +200°C

Flexible application - brush, spray, or dip coating supported

APPLICATIONS PCB Assembly, Automotive, Industrial electronics



10:1 AB STRUCTURAL ADHESIVE (IB-7500 SERIES)

STRUCTURAL BONDING

Strong adhesion and good toughness

Minimal surface treatment required

High resistance to impact, fatigue, and various fuels

APPLICATIONS Laptop and TV structural assembly, Precision electronic component, Automotive assembly



EXISTING CASH COW PRODUCTS

High demand, proven reliability, stable supply



COMPETITIVE PRICING

Cost-effective solutions without compromising on quality



GOOD TRACK RECORD

Trusted by global customers with consistent quality and performance



YOUR RELIABLE PARTNER

End-to-end support from development to mass production

DELIVERING VALUE THAT LASTS



COST SAVINGS
Optimize your total cost of ownership



FASTER TIME-TO-MARKET
Reliable materials for efficient production



CONSISTENT QUALITY
Strict quality control for every batch



LONG-TERM PARTNERSHIP
We grow together with your success





OEM SOLUTIONS

YOUR INNOVATION. OUR EXPERTISE
STRONGER TOGETHER

IDEAL CUSTOMER PROFILE

- ✓ Cost Reduction Initiatives
- ✓ New Project Development

WHAT WE NEED FROM YOU

- ✓ Your Product
- ✓ Technical Data Sheet (TDS)
- ✓ Application Requirements

OUR OEM PROCESS



WHY CHOOSE IBOND?

MADE FOR SUCCESS **BUILT FOR PARTNERSHIP**

- 35-50% Cost Savings
- Fast Lead Time
- Rapid Technical Support
- Consistent Quality

IBOND - YOUR RELIABLE OEM PARTNER



Trusted Partnership



Quality Assurance



Technical Expertise



Cost Competitive Solutions



9. SOLDERING MATERIALS

High-performance solder pastes and alloys for consistent joint formation.



Tin wire



Flux



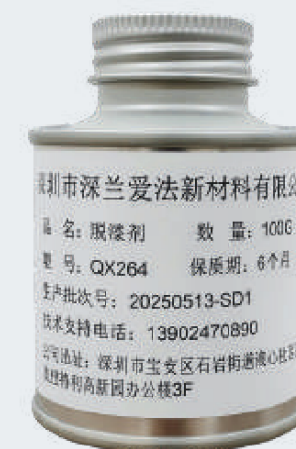
Solder bar



High reliability
lead-free solder paste



Cleaning detergent



Conformal
coating stripper



10. FMCG PRODUCTS



Fume extractors



Manual soldering stations



Ion fans



Soldering tips



Anti static uniform



Cleaning wipe



11. GREEN PACKAGING SOLUTION

Green initiative, including green packaging, is becoming the global standard. And EU is embarking the trend by 2030.



Coconut Pallet



Bamboo fiber bag



Eco Gummed Tape



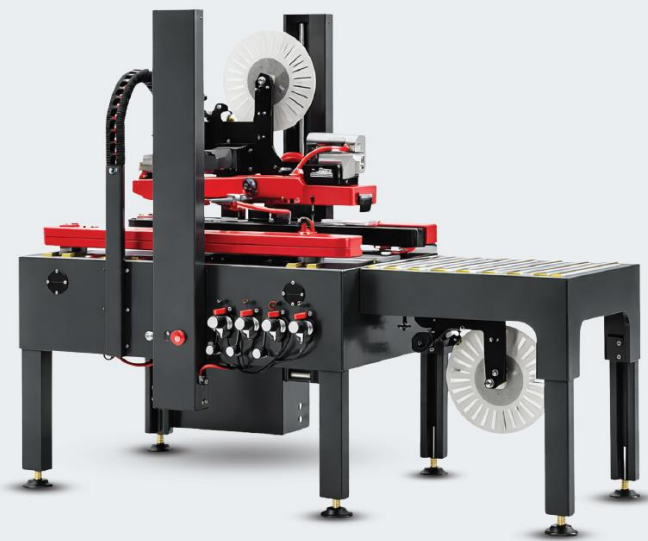
Fiber strap

Built for demanding supply chain conditions, our packaging materials offer exceptional durability, secure fastening, and reliable performance from packing to transport.

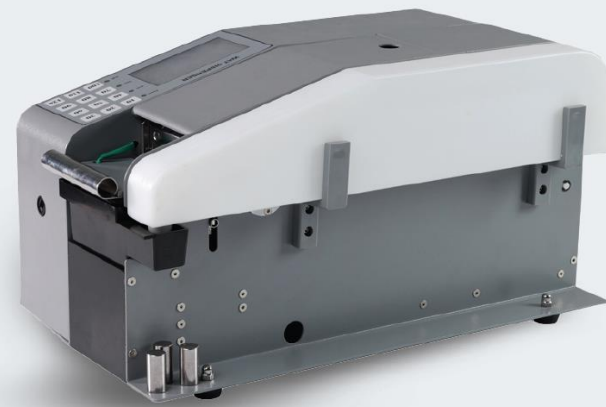


11. GREEN PACKAGING SOLUTION

Packaging equipment and materials engineered to meet modern production demands and ensure long-lasting, dependable result



**Gum Paper
Tape Sealer**



**Water-activated
Tape Dispenser**



**Handheld Fiber
Strapping Machine**

Engineered for demanding manufacturing lines, our packaging machines provide precise motion control, efficient material handling, and reliable long-cycle operation



info@jitvietnam.com



[+84] 34 810 0358



jit-asia.com | smt-mall.com

- Real-time data collection
- Production scheduling
- WIP (work in progress) and inventory tracking
- Quality control and traceability
- Equipment and energy monitoring
- Alerts and exception notifications
- Integration with ERP, PLC, and IoT devices

12. SMART FACTORY SOLUTIONS

VSKYSOFT MES

Integrated systems for data-driven production and process automation.



STRATEGIC PARTNERS

Built on Collaboration and Trust

Machines



VECTRON

SECOND

Tools



PIERGIACOMI

Soldering products



Adhesives



actnano



info@jitvietnam.com



[+84] 34 810 0358



jit-asia.com | smt-mall.com